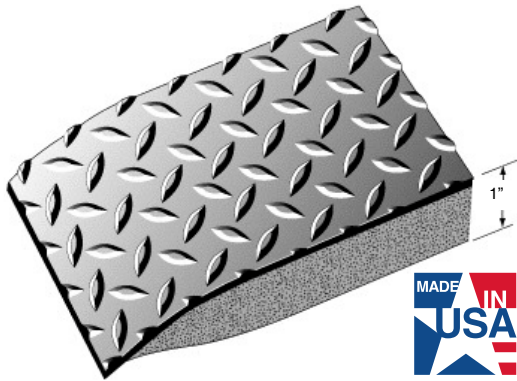
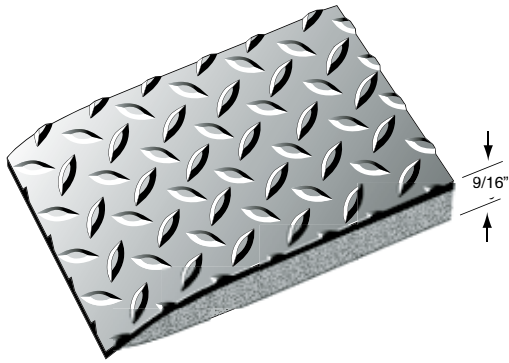




CONDUCTIVE DIAMOND™ Anti-Fatigue Mats



CONDUCTIVE DIAMOND PLATE ANTI-FATIGUE

- Disperse static electricity from an operator the moment they step on the mat and safely away from sensitive equipment.
- 5/32" thick electrically conductive diamond plate surface with a resilient closed cell polymeric sponge base.
- Your choice: 9/16" or 1" overall thickness with beveled edges.
- Resistivity: Less than 10⁶ OHMS, test method ESD-S7.1 1994.
- Conductive matting should always be used with a ground cord, and the surface kept clean.
- Use ground cord AA-107 to connect all ESD mats to a building ground or an electrical outlet, using the screw that secures the outlet cover as the attachment point.

CONDUCTIVE DIAMOND PLATE ANTI-FATIGUE

For 1" mats, add "DS" to stock number

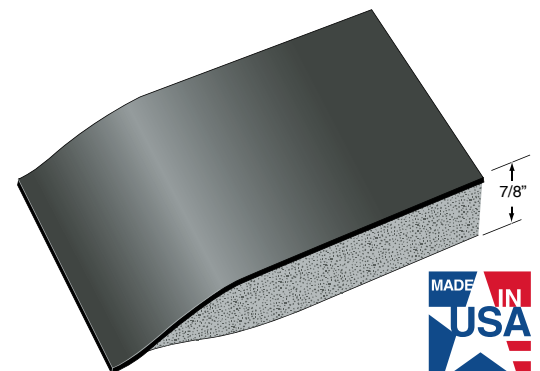
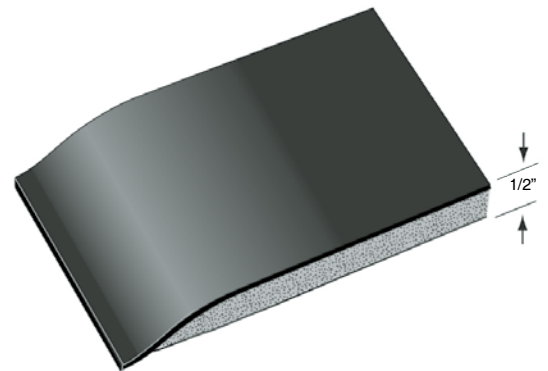
| Stock No. | Sizes | Weight Ea. 9/16" | Weight Ea. 1" |
|--|------------|----------------------|----------------|
| ECD-2436TT | 2' x 3' | 9.0 lbs. | 12.0 lbs. |
| ECD-3660TT | 3' x 5' | 23.0 lbs. | 30.0 lbs. |
| Custom Sizes - available in lengths up to 75 lin. ft. | | | |
| Stock No. | Width | Weight/Lin.Ft. 9/16" | Wt./Lin.Ft. 1" |
| ECD-36TT | 36" | 5.0 lbs. | 6.0 lbs. |
| ECD-48TT | 48" | 6.7 lbs. | 8.0 lbs. |
| ECD-72TT | 72" Seamed | 10.0 lbs. | 12.0 lbs. |
| ECD-96TT | 96" Seamed | 13.4 lbs. | 16.0 lbs. |
| Color: Black. 1" Thick/Double Sponge Option. (DS) | | | |



CONDUCTIVE SMOOTH TOP™ Anti-Fatigue Mats

CONDUCTIVE SMOOTH TOP ANTI-FATIGUE

- Prevent the accumulation of static electricity by quickly draining it from operators and eliminate the hazards of data loss or the damaging of micro-circuitry equipment.
- 1/8" thick conductive smooth surface with a resilient closed cell polymeric sponge base.
- Your choice: 1/2" or 7/8" overall thickness with beveled edges.
- Resistivity: Less than 10⁶ OHMS, test method ESD-S7.1 1994.
- Conductive matting should always be used with a ground cord, and the surface kept clean.
- Use ground cord AA-107 to connect all ESD mats to a building ground or an electrical outlet, using the screw that secures the outlet cover as the attachment point.



CONDUCTIVE SMOOTH TOP ANTI-FATIGUE

For 7/8" mats, add "DS" to stock number

| Stock No. | Sizes | Weight Ea. 1/2" | Weight Ea. 7/8" |
|---|------------|-------------------|-------------------|
| CS-2436TT | 2' x 3' | 9.0 lbs. | 12.0 lbs. |
| CS-3660TT | 3' x 5' | 23.0 lbs. | 30.0 lbs. |
| Custom Sizes -available in lengths up to 75 lin. Ft. | | | |
| Stock No. | Widths | Wt./Lin. Ft. 1/2" | Wt./Lin. Ft. 7/8" |
| CS-36TT | 36" | 4.5 lbs. | 6.0 lbs. |
| CS-48TT | 48" | 6.0 lbs. | 8.0 lbs. |
| CS-72TT | 72" Seamed | 9.0 lbs. | 12.0 lbs. |
| CS-96TT | 96" Seamed | 12.0 lbs | 16.0 lbs. |
| Color: Black Only 7/8" Thick/Double Sponge (DS) | | | |